
Plasma & Point pen

Two in one



User' s Guide

Packing list:



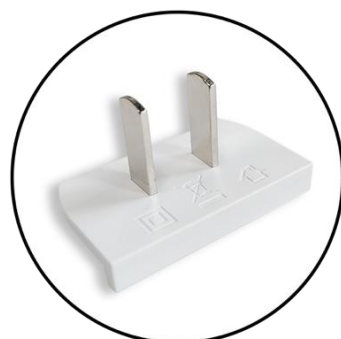
Packing box x1



Host x1



Power Adapter x1、



Power converter
(American Standard) x1



Power converter
(British standard) x1



Power converter
(European standard) x1



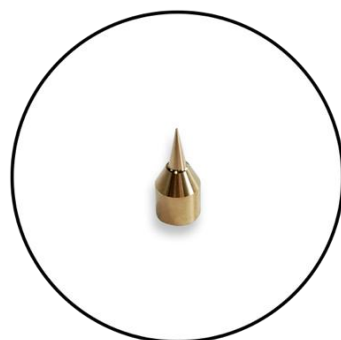
Ozone head (3#) x1



Ozone head (2#) x1



Ozone head (1#) x1



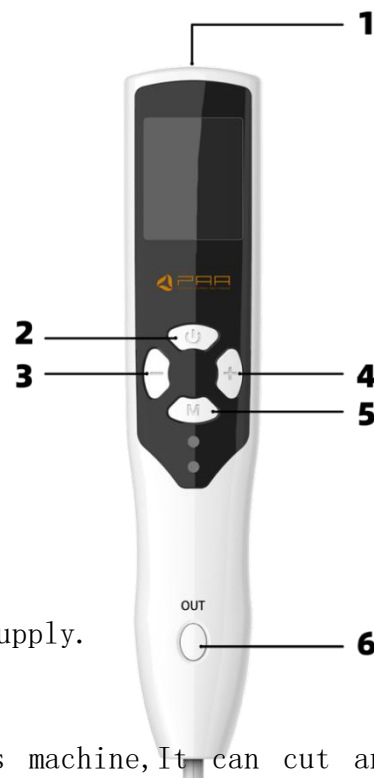
Operating probe (metal) x1



Operating probe (plastic) x3

Interface button function description:

1. USB power adapter interface
2. power on button
3. energy reduction button
4. energy increase button
5. mode selection button
6. energy launch button



1, equipment features

1.1, type:

This unit is powered by a rechargeable power supply.

1.2, function:

The high frequency current generated by this machine, It can cut and carbonize biological tissues and is suitable for skin beauty.

1.3, the implementation of standards: GB36419-2018

2、Main use and scope of application

Skin beauty:Ozone rejuvenation、Bactericidal anti-inflammatory、Acne

3、Environmental requirements and working conditions

The use environment and working conditions are as follows: Ambient temperature: 0° C—40° C

Relative humidity: 45% - 77% (no condensation)

Atmospheric pressure: 70kPa ~ 106kPa

Suitable power supply: AC100V-240V \pm 22V

Power frequency: 50Hz~60Hz \pm 1Hz

4、Safety performance

Rated operating frequency: 100KHz $\pm 5\%$

Maximum output power: 10W (Peak) , The limit is not large 18W

built-in power supply: 2 x 3.7V/1000mAh Polymer lithium battery

liquid crystal display: 24-bit color 1.77 Inch TFT

Power adapter output voltage: 12V

Power adapter output current: 1.5A

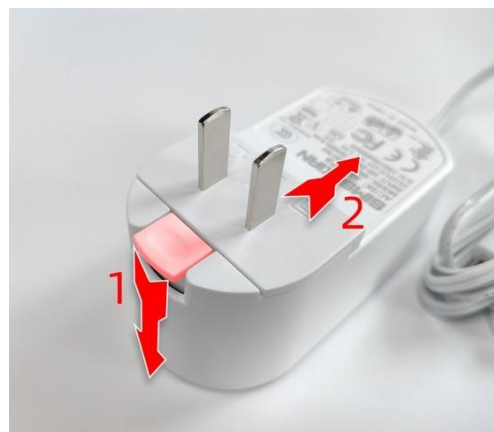
Power adapter supply voltage: AC100V-240V $\pm 22\text{V}$

Power adapter supply frequency: 50Hz~60Hz

$\pm 1\text{Hz}$ product weight (kg) : 1.3 (With box)

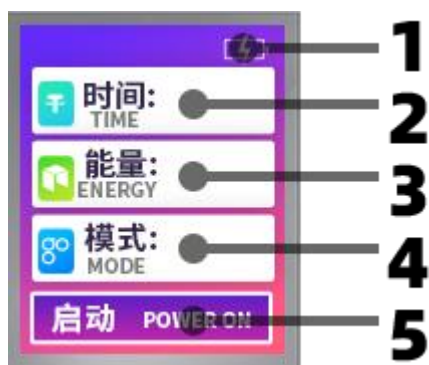
Package size (mm): 306x243x70

5、installation、debugging



Power adapter adapter installation method

Power adapter adapter removal method



- 1) Charging display
- 2) Operation countdown time (default 10 minutes)
- 3) Energy intensity display: 1 to 8
- 4) Mode display: Ozonk Ozone mode/Freck Click mode
- 5) Startup status display: default is startup status

6、Precautions

6.1 、 Read this manual carefully before operating this equipment. The instructions must be strictly observed during operation

6.2 、 Special accessories and connecting wires manufactured or supplied by the company must be used and cleaned, disinfected, connected and used as required by the instructions.

6.3 、 Do not use in the presence of flammable or explosive materials. It is recommended to use non-flammable disinfectant and anesthetic; cotton fabric should not be too close to the electrode and operating area.

6.4 、 Patients with cardiac pacemakers are forbidden to use, because current may interfere with the pacemaker to make it work abnormally or even stop. Accidents should be contacted by a cardiologist and take reliable precautions.

6.5 、 To prevent possible interference with other electrical equipment, it is recommended to use anti-jamming equipment or take anti-interference measures.。

7、Method of operation

7.1 、 charging

Connect the charger to the rear of the product, then connect the power supply.

Under normal conditions, the battery can be used for 5 to 10 hours.

7.2 、 operation



- ❖ Select the Freck point mode without connecting the power adapterOzonk
- ❖ Ozone mode must be connected to the power adapter, replace the operating head
- ❖ Tip 1: Choose the right energy low gear according to the actual operation. The low gear is generally for the skin pigment with lighter color. The high-energy gear is aimed at dark spots or sputum, the meat of the epidermis, etc. When the operation is turned on, the energy switch button is pressed, the indicator light is on, and the needle is close to the skin for about one millimeter to automatically release energy.

-
- ❖ Tip 2: The relationship between the electrode tip and the target tissue is: the spacing is large, the spark will be dispersed, the liquid will be quickly lost, and the stratum corneum will be dry. In operation, the dry cornea can be wiped off at any time by using a physiological saline cotton ball, which is convenient for observing the progress of the operation and avoiding the weakening of the insulation of the carbonized layer. When the pitch is small or even no spacing, the target tissue becomes a conductor completely, so that the electrode and the target tissue cannot generate current spark power, which makes the cutting slow and the hemostasis effect is not good. Make a slight distance between the electrode and the tissue
 - ❖ The relationship between the thickness of the electrode and the tissue to be manipulated is: when the cross-sectional area is large, the spark is scattered, the wound is large, the ability is poor, and the cross-sectional area is smaller, the spark is concentrated, the cutting force is strong, the wound is small, tidy, and the repair is fast. It is ideal to use a thinner electrode, because of its small cross-sectional area, good toughness, and plasticity, which is easy to bend into different angles and adapt to various parts of operation.
 - ❖ Ozone function: The oxygen in the air is generated by high-frequency electric ions to generate ozone. Ozone acts on the cell membrane of bacteria, causing damage to the membrane components and destroying lipoproteins and lipopolysaccharides in the membrane, changing the permeability of the cells, causing cell lysis to die, thereby killing bacterial fungi and aphids in a very short time. Inhibition of inflammation, acne effect is obvious. More importantly, after ozone sterilization, it is reduced to oxygen, and there is no residue or secondary pollution.
 - ❖ Revitalizing function: speed up skin metabolism, promote collagen regeneration, and alleviate skin aging. Relieve skin itching caused by allergies and dryness. It inhibits melanin, brightens skin tone, delicate skin texture, shrinks pores, improves skin elasticity, anti-aging and improves allergic dermatitis.

7.3、Accessories cleaning and disinfection

- a) Reusable charger, (handle) operating head, should be kept clean to prevent corrosion and pollution.

b) Cleaning and disinfection of the freckle operation head: clean before use, clean the blade or sandpaper, rub and scrape, remove the carbide in the front section and soak it in the disinfectant.

c) Ozone rejuvenation operation head cleaning and disinfection: use sterile cotton aphid to remove venom wipe and keep the operation head dry without residual liquid

7.4、Transport and storage conditions

This machine is an electronic instrument type equipment, and it must not be seriously vibrated, collided or rained during transportation.

Transportation shall comply with the requirements indicated in the GB/T 191-2008 packaging storage and transportation icon;

Storage environment temperature: $0^{\circ}\text{C} \sim 55^{\circ}\text{C}$,

Relative humidity: 45% - 77% (no condensation),

Atmospheric pressure: $70\text{kPa} \sim 106\text{kPa}$, no corrosive dust.

7.5、Unpacking and checking

1) After unpacking, first check if the host is in good condition. If there is any damage, please report the manufacturer immediately or through the dealer, otherwise the warranty right will be lost; then check whether the accessories that are randomly configured by the machine are complete;

After the user has punched the package, the integrity and integrity of the host, accessories and random files should be checked.

8、maintenance and repair

1) Do not use the instrument in the following environments:

a. Ø High temperature and humid environment;

b. Ø Dustous environment;

c. Ø There is a banquet and a lot of water vapor;

2) If there is a malfunction during use, the power should be turned off immediately. It must be disassembled, repaired by a professional, or sent to the dealer or factory for repair;

3) Liability exemption

The manufacturer is not responsible for any of the following circumstances:

- a. Because of fire, earthquake, war and other irresistible situations;
 - b. Wrong operation due to user's fault;
 - c. Damage caused by the use of methods other than this manual;
 - d. Not following the instructions in this manual.
- 4) When using this instrument, please do not approach the wall, keep the space around the instrument more than 30cm, so as to dissipate heat.。

9、caveat

- a. Please follow the relevant laws and regulations and do not use the instrument in the following environments.
- b. For example, gas stations, chemical warehouses, etc., where flammable or explosive oil or chemicals are stored, it is strictly forbidden to use the instrument.
- c. Do not use in hospital operating rooms, emergency rooms, intensive care units, etc.。
- d. To avoid lightning strikes during thunderstorms, do not use outdoors.。
- e. Do not use in high humidity areas such as bathrooms, as this may result in electric shock, personal injury, fire and electrical damage.。

f. Please comply with the relevant laws and regulations that are strictly prohibited in any environment..

10. Safety and environmental precautions

PRODUCT TOXIC AND HAZARDOUS SUBSTANCES DECLARATION							
SERIAL NUMBER	PART NAME	HAZARDOUS SUBSTANCES OR ELEMENTS (FILL IN O AS REQUIRED x)					
		(Pb)	(Hg)	(Cd)	(Cr(VI))	(PBB)	(PBDE)
1	Plastic (material)parts	O	O	O	O	x	x
2	Hardware structure / decorative parts	x	O	O	O	O	O
3	Board assembly	x	O	O	O	O	O
4	power cable	x	O	O	O	O	O
5	Power cord plug	x	O	O	O	O	O
6	Breaker	O	O	x	O	O	O

O: Indicates that the content of this toxic and hazardous substance in all homogeneous materials of this part is below the limit requirement specified in SJ/T-11363-2006 "Limited Requirements for Toxic and Hazardous Substances in Electronic Information Products".

×: Indicates that the toxic or hazardous substance contained in at least one of the homogeneous materials of the part exceeds the limit requirement specified in SJ/T11363-2006.

#: When the product is disposed of after proper consumption, it is hoped that it will be disposed of in accordance with the recycling guidelines for electronic information products and in accordance with laws and regulations.

Technical statement:

The hardware components, injection molded parts, connectors and most electronic components of the machine comply with the requirements of the EU RoHS Directive. Only a few components may not affect the reliability of the product due to global technical limitations, and the replacement of toxic and hazardous substances or elements is not realized. Please use the product with confidence, it will not affect the user under normal use conditions.